

COMPLETE SYSTEM PART No. 11-ABS-101

*MOUNT CONTROL BOX AS CLOSE AS POSSIBLE TO THE WATER FILL HOSE/NOZZLE ASSEMBLY TO KEEP THE POLY HOSE SHORT.

*ASSEMBLE WATER FILL HOSE/NOZZLE ASSEMBLY SO IT WILL DRAIN.

*AFTER INSTALLATION IS COMPLETE, INSERT FILL NOZZLE INTO WATER TANK UNTIL IT HITS THE STOP, TURN ON WATER. IT WILL SHUT OFF AUTOMATICALLY.

*GROUND PER NATIONAL AND LOCAL CODES.

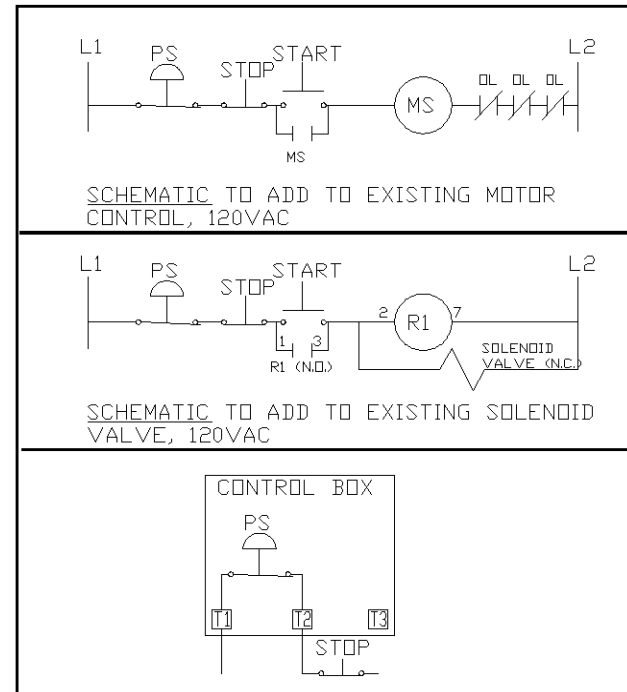
FOR CONNECTION TO EXISTING ON/OFF PUMP CONTROL:

SYSTEM INCLUDES:

- (1) NOZZLE ASSEMBLY
- (20') POLY TUBE, 1/4"
- (1) CONTROL BOX, WITH PRESSURE SWITCH
- (2) HOSE CLAMPS
- (6) CABLE TIES

USERS EXISTING START-STOP STATION MUST INCLUDE MOMENTARY CONTACTS AND HOLDING CONTACTS.

IF A SINGLE PHASE PUMP IS USED WITH 2 WIRE CONTROL, A RELAY MUST BE ADDED WITH A START-STOP STATION.



SCALE
NONE
DRAWN BY
FOX
DATE
10 JULY 02



Jamieson Equipment Company
toll free 800.875.0280
sales@jamiesonequipment.com
www.jamiesonequipment.com

ENGINEER
DATE
APPROVED BY
DATE

TITLE
INSTALLATION, MODEL A
WATERDOG CONTROL VALVE
EXISTING PUMP/SOLENOID SET-UP

DRAWING NUMBER
11-AOF-101
REV
A

A		ADDED SOLENOID SCHEMATIC, CHANGE P/N (11FIA001)	FOX	05AUG02	THIS DRAWING IS CONFIDENTIAL PROPERTY OF BFK TECHNOLOGIES INC. THIS DRAWING AND ITS CONTENTS MAY NOT BE REPRODUCED, PUBLISHED OR DISCLOSED TO ANYONE WITHOUT PRIOR CONSENT OF BFK TECHNOLOGIES INC.
REV	ECD	DESCRIPTION	BY	DATE	